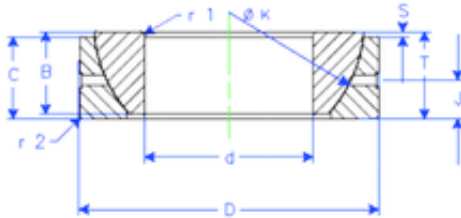




OF Bearing Industrial Co.,Ltd.

Enduro GE 35 SX plain bearings



Bearing No. GE 35 SX

Size	35x62x18 mm
Bore Diameter	35 mm
Outer Diameter	62 mm
Width	18 mm
d	35 mm
D	62 mm
T	18 mm
B	18 mm
C	16 mm
r1 min.	1 mm
r2 min.	1 mm
J	9 mm
K	56 mm
S	2,1 mm
Weight	0,268072872 Kg
Basic dynamic load rating (C)	78 kN

GE 35 SX Bearing 2D drawings and 3D CAD models